



2025 CATALOGUE

---

*EXPERIENCE THE  
DELTA DIFFERENCE*



PROUDLY MADE IN CANADA

---



## WHO WE ARE

At Delta, we only build thermoformed kayaks because we believe in the technology, our kayak designs and our state-of-the-art manufacturing techniques. We're proud to craft our kayaks in coastal British Columbia and feel there's no better place to prove our designs. We make kayaks for everyone, from beginner to expert, because we believe every paddler deserves a well-crafted kayak that suits their own style and ability. Our focus has always been to build the world's finest thermoformed kayaks right here in North America, and we think our quality kayaks speak to the value of doing one thing and doing it well. That's who we are. **That's the Delta Difference.**



## BETTER BY DESIGN

Delta makes choosing the right kayak easy. As avid paddlers we know that fit, comfort and performance are vital to experiencing the best that kayaking has to offer. Optimizing your fit and comfort is quick and easy with the Delta multi-positional Contour II sliding seat system, Seadog™ foot braces and integrated thigh pads. All Delta Kayaks feature a long waterline and upswept bow for an efficient dry ride. Deck fittings are recessed and hatches flush-mounted for a sleek look and no-snag design. Bow and stern hatches are large and provide easy access into full-volume dry storage compartments that are sealed by watertight flanged bulkheads. The advanced thermoform construction of our kayaks provides better rigidity and far less weight than polyethylene kayaks and durability that surpasses what fiberglass kayaks have to offer.



## ADVANCED THERMOFORM CONSTRUCTION

Our skilled workers carefully craft every Delta kayak using a proprietary blend of thermoplastic materials. An ABS base layer (1) provides superior impact-resistance and rigidity, while the Solarkote exterior surface (2) contributes outstanding abrasion and UV resistance for a smooth, bright finish and vibrant, lasting colours. Our kayakers have higher impact strength than composite fibreglass boats and hold their shape better than polyethylene kayakers. The first thing you're likely to notice, however, is their weight. Thanks to our advanced thermoform construction, Delta kayakers are not just tough and good-looking — they're also among the lightest on the market.

NEW FOR 2025  
MAGENTA

2 SOLARKOTE  
EXTERIOR LAYER



1 ABS BASE LAYER

## "ELEVATE" CONTOUR SEAT SYSTEM

Personalizing your fit and comfort is simple with our feature rich, multi-position Contour II Seat System. Its ergonomic design provides optimum support with channel-vented foam cushioning for excellent drainage and air flow.

### KEY FEATURES OF THE CONTOUR II SEAT SYSTEM ARE:

1. Hi-Low Backrest Adjustment
2. Channel Venting
3. Contour Fit Kit Ready
4. Core Drainage
5. Multi-Position Seat Adjustment

**6. Multi-Position Seat Angle Adjustment** for better support and pressure distribution. Up to an additional 2" of leg support angle adjustment in multiple increments for better performance and all day comfort

\* Also available as a retrofit kit to upgrade Contour II seats to Contour III

UPDATED FOR 2025



» Visit [www.deltakayaks.com/elevate](http://www.deltakayaks.com/elevate) to learn more!





## ADVENTURE REC

EXCEPTIONAL STABILITY.  
UNSURPASSED ENJOYMENT.

Our Adventure Rec kayaks are the perfect choice for novice paddlers, anglers or photographers looking for a lightweight kayak with ample storage options, ease of entry and great performance. They feature the superior tracking, effortless glide & exceptional stability of our proprietary Fusion Hull design.

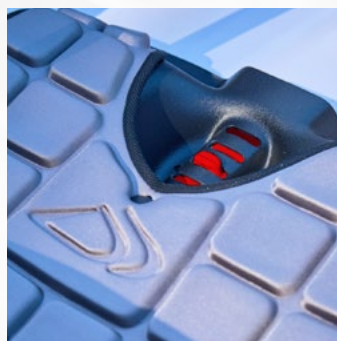


### CATEGORY FEATURES



#### LARGE COCKPIT

This category of recreational kayaks features large cockpit openings with premium out-fitting, allowing for easy entry and all-day comfort.



#### PERSONALIZED FIT

Our feature rich, multi-position Contour II Seat System provides advanced support, cushioning, drainage and airflow.



#### UNDER DECK POD

Located inside the cockpit, it's the perfect place to store essentials you may need to easily access during your paddle. Just twist to lock/unlock.



#### FUSION HULL DESIGN

Our proprietary fusion hull design offers efficient glide with advanced stability and tracking. The pronounced V-shaped bow quietly cuts through the water and allows for more precise maneuvering.



Good stewardship of our planet is important to us. Delta Kayaks are made using environmentally responsible practices.  
Follow us on Facebook & Instagram @deltakayaks. Proudly manufactured in Canada 🇨🇦

**DELTAKAYAKS.COM**  
📷 🌐 ✕





ADVENTURE REC



## DELTA 10AR

This lightweight 10-footer brings a whole new level of performance to the world of recreational kayaks. Its remarkable quickness and stability come courtesy of our proprietary Fusion Hull technology, which combines the best features of two proven concepts (quiet and predictable V shapes and ultra-steady catamaran hulls) to deliver stable performance without the excessive width of most recreational kayaks. The result is an excellent kayak for fishing and photography that's small and light enough to take almost anywhere, or station on the deck of larger craft.



AVAILABLE COLOURS



## DELTA 12AR

The Delta 12AR combines the stability and performance of our proprietary Fusion Hull technology with an easy-entry cockpit and premium outfitting geared toward all-day comfort. The fusion design adds some ultra-stable catamaran DNA under the waterline, delivering the effortless glide, precise handling and exceptional stability that sets the 12AR apart from other open-cockpit recreational kayaks. It provides ample space for gear and puts safety first with sealed hatches at the bow and stern. All this adds up to an ideal platform for anglers and paddling enthusiasts, especially those seeking a comfortable cockpit with room for a furry companion.



AVAILABLE COLOURS



KAYAK MODEL	CATEGORY	LENGTH	WIDTH	DEPTH	WEIGHT	COCKPIT SIZE	COCKPIT OPENING	COCKPIT VOLUME	DAY HATCH	BOW DRY STORAGE	STERN DRY STORAGE	MAX CAPACITY*	RUDDER	SKEG
DELTA 10AR	AR	10'	27"	14"	37 LBS / 16.7 KG	XL	18.5" X 36"	58 GAL / 220 L	-	3.5 GAL / 13.2 L	33 GAL / 124 L	280 LBS / 127 KG	-	-
DELTA 12AR	AR	12'	26.5"	14"	42 LBS / 19 KG	XXL	20" X 50"	60 GAL / 227 L	-	13 GAL / 49 L	33 GAL / 125 L	320 LBS / 145 KG	-	-

\* Suggested maximum capacity including paddler and gear



Good stewardship of our planet is important to us. Delta Kayaks are made using environmentally responsible practices.  
Follow us on Facebook & Instagram @deltakayaks . Proudly manufactured in Canada 🇨🇦

DELTAKAYAKS.COM







## LIGHT TOURING

ULTRALIGHT PERFORMANCE.  
OUTSTANDING VERSATILITY.

Our Light Touring kayaks are the ideal choice for paddlers seeking performance in a smaller, lightweight design. With plenty of storage capacity for overnight or weekend trips, they offer responsive handling while maintaining excellent stability. A full complement of deck rigging and outfitting features make these models the “compact sea kayaks” of the Delta fleet.

### CATEGORY FEATURES



#### LOW PROFILE DAY POD

Store your personal items in this quick-access, sealed compartment.

Extra buoyancy is an added bonus.



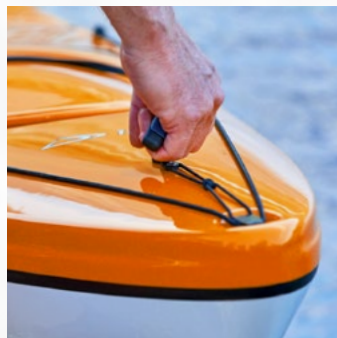
#### PERSONALIZED FIT

Our feature rich, multi-position Contour II Seat System provides advanced support, cushioning, drainage and airflow.



#### PRESS-LOCK HATCH SYSTEM

Innovative, colour matched, hard-shell covers provide a secure seal with easy on and off convenience.



#### DUAL DENSITY GRAB HANDLES

All LT models feature our ergonomic grab handles on both the bow and stern. They're well situated and are easy on the hands.





LIGHT TOURING



## DELTA 12s

The Delta 12s offers outstanding versatility for small-and medium-framed paddlers craving a lightweight and stable touring kayak. It's designed from the ground up for speedy and responsive handling, and packed with thoughtful features smaller paddlers will appreciate, such as lower deck combings that won't catch your elbows. The 12s is a capable performer on day trips and weekend adventures in bays and coastal waters. It's ready for the long haul, with a comfortable cockpit and three storage hatches in a stable hull that delivers sustained speed and superior tracking.



AVAILABLE COLOURS



## DELTA 12.10

This capable light-touring kayak is bound to impress paddlers looking for the perfect combination of versatility, stability and comfort. Ideal for day trips or long weekends, the popular Delta 12.10 delivers big touring performance in a compact package. This nimble tripper has a full suite of features and a spacious cockpit with enough legroom to make almost any paddler feel at ease. With sealed bow and stern storage compartments and a convenient day hatch, the 12.10 features an extended waterline for sustained speed and superior tracking on longer outings.



AVAILABLE COLOURS



KAYAK MODEL	CATEGORY	LENGTH	WIDTH	DEPTH	WEIGHT	COCKPIT SIZE	COCKPIT OPENING	COCKPIT VOLUME	DAY HATCH	BOW DRY STORAGE	STERN DRY STORAGE	MAX CAPACITY*	RUDDER	SKEG
DELTA 12s	LT	12"	24"	12"	38 LBS / 17 KG	S	16.5" X 31.5"	39 GAL / 148 L	1.8 GAL / 7 L	12.5 GAL / 47.5 L	26 GAL / 99 L	220 LBS / 100 KG	-	-
DELTA 12.10	LT	12'10"	25"	13.5"	41 LBS / 18.6 KG	R	17" X 32"	56.7 GAL / 214.6 L	1.8 GAL / 7 L	15.9 GAL / 60.5 L	30.3 GAL / 114.7 L	300 LBS / 136 KG	-	-

\* SUGGESTED MAXIMUM CAPACITY INCLUDING PADDLER AND GEAR



Good stewardship of our planet is important to us. Delta Kayaks are made using environmentally responsible practices.  
Follow us on Facebook & Instagram @deltakayaks . Proudly manufactured in Canada 🇨🇦

DELTAKAYAKS.COM







## TOURING

TOURING PERFORMANCE.  
EXPEDITION CAPACITY.



These comfortable cruisers appeal to novice and advanced paddlers alike, thanks to their outstanding versatility, massive storage capacity and predictable performance. The hulls feature an extended waterline and moderate V-shape for an impressive combination of speed and stability, imparting confidence in almost any sea conditions.

## CATEGORY FEATURES



### MODERATE 'V-SHAPED' HULL

The moderate v-shaped hull and pronounced chine of this series of kayaks provide an impressive combination of speed and stability.



### DELTA RUDDER SYSTEM

Channel mounted & individually tubed rudder lines ensure a smooth and kink-free operation of the delta rudder system.



### ENHANCED STORAGE CAPACITY

Large, accessible storage hatches make loading and unloading gear a breeze.



### PADDLEFLOAT RESCUE SYSTEM

Raised lines and scalloped deck make paddle float re-entry quick and safe.





## TOURING



### DELTA 14

Designed to paddle in any conditions, the Delta 14 is a versatile touring kayak ideal for multi-day adventures and day trips alike. Its long waterline and moderate V-shaped hull provide an impressive combination of speed and stability that will inspire confidence in both new and experienced paddlers. Easy to handle on or off the water, this lightweight thermoformed kayak is packed with features, including our proprietary multi-position Contour II Seat System, a solid rudder, and loads of storage accessed via three Press-Lock hatches.



#### AVAILABLE COLOURS



### DELTA 15.5GT

The Delta 15.5GT is a comfortable cruising kayak with superior load-carrying capacity and sure-footed performance that inspires confidence in all conditions. This expedition-ready kayak offers excellent speed and handling without compromising stability, thanks to an extended waterline and moderate V-shaped hull that keeps paddlers on course in almost any sea state. The 15.5GT is equipped for multi-day adventures, with Press-Lock hatches, our adjustable Contour II Seat System and a full complement of deck rigging. With its moderate beam and leggy waterline, this kayak delivers the rock-solid stability and impressive glide that give you the confidence to tour farther.



#### AVAILABLE COLOURS



### DELTA 17.5T

The Delta Traverse 17.5T is a light and fast two-person kayak ideal for new and experienced paddlers. The lightest full-featured tandem in its class, the stable and maneuverable Traverse is a joy to paddle and fits easily in a standard garage. Using design cues from our popular 15.5 touring kayak, we built a responsive double with comfortable cockpits spaced to avoid paddle-clashing. Sealed bow and stern hatches and a roomy middle storage pod give it the load-hauling capacity to match its expedition-worthy abilities. Outfitted for safety, comfort and paddling performance, this sleek double is perfect for your next adventure.



#### AVAILABLE COLOURS



KAYAK MODEL	CATEGORY	LENGTH	WIDTH	DEPTH	WEIGHT	COCKPIT SIZE	COCKPIT OPENING	COCKPIT VOLUME	DAY HATCH	BOW DRY STORAGE	STERN DRY STORAGE	MAX CAPACITY*	RUDDER	SKAG
DELTA 14	TR	14'	23.5"	13"	45 LBS / 20 KG	R	17" X 32"	46 GAL / 175 L	1.8 GAL / 7 L	19 GAL / 72 L	34 GAL / 130 L	320 LBS / 145 KG	✓	✓
DELTA 15.5GT	TR	15'6"	24"	13"	49 LBS / 22.2 KG	R	17" X 32"	48 GAL / 181 L	1.8 GAL / 7 L	25 GAL / 92 L	38 GAL / 147 L	360 LBS / 164 KG	✓	✓
DELTA 17.5T TRAVERSE	TR	17' 6"	27.25"	13.5"	70 LBS / 31.8 KG	R	17" X 32"	BOW: 45 GAL / 185 L STERN: 52 GAL / 198 L	3.1 GAL / 14 L	15 GAL / 56 L	32 GAL / 121 L	560 LBS / 254 KG	✓	-

\* SUGGESTED MAXIMUM CAPACITY INCLUDING PADDLER AND GEAR



Good stewardship of our planet is important to us. Delta Kayaks are made using environmentally responsible practices. Follow us on Facebook & Instagram @deltakayaks. Proudly manufactured in Canada 🇨🇦

DELTAKAYAKS.COM  
📷 🌐 ✕



## PERFORMANCE TOURING

ADVANCED PERFORMANCE.  
BUILT FOR ADVENTURE.

Optimal balanced performance is what Delta's Performance Touring Kayaks are all about. Whether eating up the miles on long treks or playing in the surf, these boats do it with precision and grace. A shallow "v" shaped hull, moderate rocker and finely tuned chines come together to make these outstanding boats shine on the water. They really do paddle as good as they look.

### CATEGORY FEATURES



#### SHALLOW V-HULL WITH PRONOUNCED CHINE

Provides an optimal blend of speed and stability while also allowing for advanced edging and unparalleled tracking.



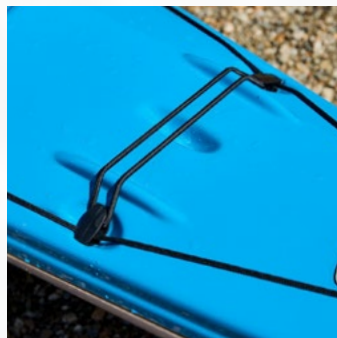
#### DELTA SKEG & RUDDER OPTION

Channel mounted and individually tubed lines ensure a smooth and kink-free operation of the Delta spring loaded skeg system and aluminium rudder.



#### CURVED BULKHEADS

Our curved and flanged bulkheads provide improved torsional rigidity, advanced impact cushioning and increased storage capacity.



#### PADDLE PARK

Raised bungee lines make it easy to secure and access a spare paddle.





# PERFORMANCE TOURING



## DELTA 15s

The Delta 15s is an ideal choice for small- and medium-sized paddlers seeking a performance kayak with great cruising speed, exceptional tracking and superior edging. Quick, responsive and easy to handle, the 15s is perfect for seasoned paddlers or those seeking to take their skills to the next level. It combines sleek lines with a cockpit tailored for an intimate fit, including combings that won't catch your elbows and a low-slung seat that delivers exceptional primary stability. With abundant storage and an optional rudder or spring-loaded skeg, the 15s is ideal for extended touring as well as ocean play.



AVAILABLE COLOURS



## DELTA 16

Excelling in rough seas, surf and wind, the elegant Delta 16 offers a balanced combination of maneuverability and tracking. This nimble sea kayak stays the course in challenging conditions, holds a lively pace with ease and has plenty of storage capacity for multi-day exploration. With substantial rocker and a moderately concave sidewall, the Delta 16 edges with satisfying bite, and turns on a dime. At 16 feet, its performance envelope is best explored by a medium-sized paddler. Features include a low-profile front day hatch, Press-Lock hatches, our Contour II Seat System, and optional rudder or spring-loaded skeg.



AVAILABLE COLOURS



## DELTA 17

The Delta 17 is a fast and versatile touring kayak, ideal for extended trips, comfortable cruising and play. It fills all these roles with satisfying grace and efficiency and is a veritable champion on ocean swells and in rough conditions. The Delta 17's V-shaped hull, pronounced chine and moderate rocker offer impressive tracking and a smooth transition to edge. It has plentiful storage for extended tours, and features a convenient front day hatch, Press-Lock hatches, multi-position Contour II Seat System, and choice of rudder or spring-loaded skeg.



AVAILABLE COLOURS



KAYAK MODEL	CATEGORY	LENGTH	WIDTH	DEPTH	WEIGHT	COCKPIT SIZE	COCKPIT OPENING	COCKPIT VOLUME	DAY HATCH	BOW DRY STORAGE	STERN DRY STORAGE	MAX CAPACITY*	RUDDER	SKEG
DELTA 15s	PT	15'	22"	11.5"	44 LBS / 20 KG	S	16.5" X 31.5"	39 GAL / 149 L	1.8 GAL / 7 L	17 GAL / 65 L	27 GAL / 102 L	270 LBS / 122 KG	✓	✓
DELTA 16	PT	16'	22"	12.25"	48 LBS / 21 KG	R	17" X 32"	42.5 GAL / 161.0 L	1.8 GAL / 7 L	20.8 GAL / 78.6 L	31.7 GAL / 120 L	330 LBS / 150 KG	✓	✓
DELTA 17	PT	17'	22.5"	13"	50 LBS / 22.6 KG	R	17" X 32"	47 GAL / 179 L	1.8 GAL / 7 L	26 GAL / 100 L	42 GAL / 158 L	360 LBS / 164 KG	✓	✓

\* SUGGESTED MAXIMUM CAPACITY INCLUDING PADDLER AND GEAR



Good stewardship of our planet is important to us. Delta Kayaks are made using environmentally responsible practices. Follow us on Facebook & Instagram @deltakayaks. Proudly manufactured in Canada 🇨🇦

DELTAKAYAKS.COM  
Instagram Facebook Twitter



## GENUINE DELTA KAYAK ACCESSORIES

We have designed a full complement of genuine accessories to bolster the experience that comes with owning a Delta Kayak. Whether you're looking to keep yourself dry with the addition of a spray skirt for those wet-and-wild conditions, or are looking for a cockpit cover to keep your kayak clean and adventure-ready for your next trip, we've got something for every model of kayak we make.



**DELTA NYLON  
SKIRT ( 10AR )**



**DELTA DELUXE  
NEO/NYLON SKIRT ( R )**



**DELTA DELUXE NEOPRENE  
COCKPIT COVER ( R )**



**DELTA DELUXE NEOPRENE  
COCKPIT COVER ( 10AR )**



**DELTA NYLON COCKPIT  
COVER ( R )**



**DELTA NYLON COCKPIT  
COVER ( 12AR )**



**DELTA THIGH PADS**



**CONTOUR HIP  
PAD FIT KIT**



**NOVUS POLISH KIT**

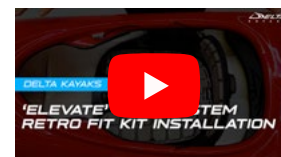


**DELTA KAYAKS  
REPAIR KIT**



**ELEVATE  
RETRO-FIT KIT**

**NEW FOR 2025**



To learn more about our elevate seat system and ELEVATE retrofit kit, visit [www.deltakayaks.com/elevate](http://www.deltakayaks.com/elevate)



**NEW FOR 2025!**

# "MAGENTA"

NEW, LIMITED EDITION COLOUR ON SELECT MODELS ONLY.  
WHILE QUANTITIES LAST.



**DELTA  
12AR**

**DELTA  
12S**

**DELTA  
12.10**

**DELTA  
14**

**DELTA  
15S**





## ENVIRONMENTAL CONSIDERATION

Consideration for the environment is an important part of our philosophy at Delta Kayaks. While you are enjoying your kayak in the outdoors, you can be confident in the knowledge that Delta Kayaks are made from materials and construction methods that tread lightly on our planet. The materials used to make Delta Kayaks are safe to manufacture and are completely recyclable. 100% of our scrap material is collected and repurposed so there is no waste.

## DELTA KAYAKS WARRANTY

Delta Kayaks is pleased to accompany the finest thermo-formed kayakers with a three (3) year limited warranty to the original owner of the kayak. The Delta Kayaks warranty covers defective materials and workmanship when the kayak is used as intended under normal conditions. You can register your kayak online by filling out the form located on our website within 30 days of purchase in order to initiate the warranty.

## PROUDLY MADE IN NORTH AMERICA

All of our kayak models are made right at our manufacturing facility in Maple Ridge, British Columbia, Canada. We use Computer Aided Design (CAD) and years of experience to design our moulds. Much of the final assembly of our kayaks is done by hand so that we can make sure every step of the process is done to our strict standards.





## NOTES



Good stewardship of our planet is important to us. Delta Kayaks are made using environmentally responsible practices. Follow us on Facebook & Instagram @deltakayaks . Proudly manufactured in Canada 🇨🇦

DELTA KAYAKS.COM





# EXPERIENCE THE DELTA DIFFERENCE



PROUDLY MADE IN CANADA

11596 KINGSTON STREET, MAPLE RIDGE, BC, V2X 9J8

TOLL FREE: 1 866 877 6544 | T: 604 460 6544 | F: 604 460 6535

DELTA KAYAKS.COM

**DELTA**  
KAYAKS